

Information about people with disabilities and inclusive urban development and infrastructure



Easy read booklet Issue



Who we are



We are Social Development Direct.



We give advice to people working on **International Development** on how to include all people, such as women and people with disabilities



International Development

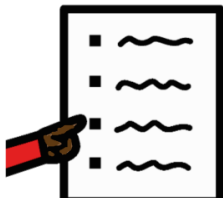
supports people around the world who do not have enough access to the things they need.



We work with other groups to run the Disability Inclusion Helpdesk.



This booklet is part of the **19th Helpdesk Evidence Digest**. It focuses on inclusive urban design and people with disabilities.



Please look at the full report for links to documents or for more information.



Sometimes we need to use new or difficult words. These words are in **bold**. There is a list of what they mean at the end of the document

Discussion about people with disabilities and inclusive urban development and infrastructure



We spoke to Mikaela Patrick who works for **Global Disability Innovation Hub**



She told us about how important inclusion is for **infrastructure** and **urban design**.



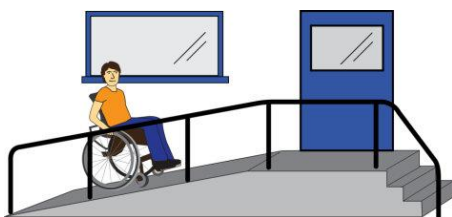
People with disabilities have the **right to accessibility**.



We should be working with people with disabilities when we design our cities.



If we start designing a more accessible world now, we can build a more inclusive future.



Mikaela told us that inclusion and accessibility needs to be one of the main priorities when designing **inclusive infrastructure**.



We can make our **environment** more inclusive by creating jobs for people with disabilities in **local government**.



Global Disability Innovation Hub use **inclusive design** ideas when developing **infrastructure**.



This includes talking with local people with disabilities and including them in decision-making.



Making things accessible from the start of a project can make it cheaper and easier to build.



Everyone involved in **infrastructure** projects should have a basic understanding of accessibility.



It is important to maintain **environments** to make sure they stay **accessible**.

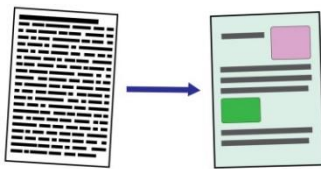


It is important that people with disabilities' voices are heard when working on infrastructure projects.

This can be done in a number of ways, such as:



- Making sure venues for meetings are **accessible**
- Hiring **communication aids**, like sign language interpreters
- Presenting ideas in a clear and **accessible** manner



It's important to remember that engagement with people with disabilities should be ongoing, not a one off.



Designing **infrastructure** which meets the needs of people with disabilities creates a much fairer world.

Evidence and guidance on people with disabilities and inclusive urban development and infrastructure



Research looked at how important **urban** green spaces are for people with disabilities.



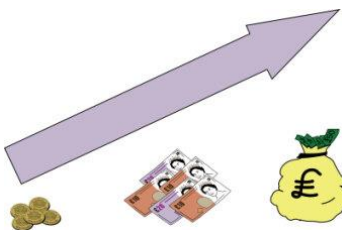
It said that if cities focused on including people with disabilities in their plans, it would improve **public resources**.



Different **research** looked at how people with disabilities in Nepal don't have good access to **built environments**.



A **report** by the **Global Disability Innovation Hub** said that there are challenges faced by people with disabilities in public spaces.



The **World Economic Forum** posted a **blog** which said **investing** in **accessibility** can be cheaper than **care interventions**.



Urbanet posted a **blog** which suggested that people with disabilities often face social and **environmental** challenges because of **exclusionary** planning and decision making.



Research suggests that **invisible disabilities** are often not considered in **urban design**.



Centre for Disability Land Inclusion Africa wrote a **blog** which suggested Nigerian cities are poorly designed for people with disabilities.



Research was done to find out how **accessible** roads can be in Nigerian cities for people with **mobility impairments**.



It found that nearly no roads have **infrastructure** to help people with **mobility impairments**.



It said it is important to include people with **mobility impairments** in planning and design of **infrastructure**.



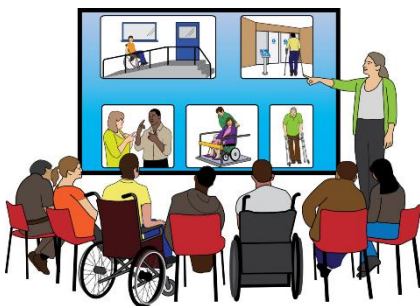
The **Disability Inclusion Helpdesk** published a guide to help people include more **equality** in **infrastructure projects**.



The **Global Disability Innovation Hub** reported that there are challenges and opportunities for **inclusive design** in **Colombia**.



They said that there are physical and social barriers for people with disabilities in the country.



The **World Bank** posted a **blog** which suggested there have been some good **inclusive infrastructure** projects worked on with the **Japan International Cooperation Agency**.



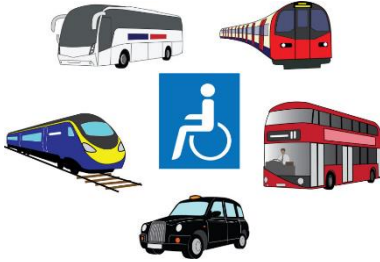
Guidelines have been published to help with **inclusive** water, **sanitation** and **hygiene infrastructure**.



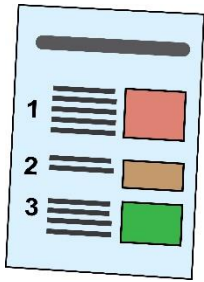
United Nations said that **inclusive** water systems are important for achieving the **Sustainable Development Goals**.



C40 Cities published guides to help cities deliver **disability inclusive climate action**.



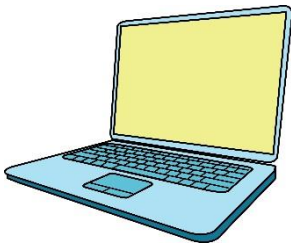
The guides cover transport, energy, and disaster management.



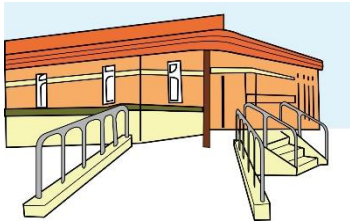
What do these words mean?



Accessibility means making things easier for everyone to use, especially for people with disabilities.



A **blog** is a piece of writing on the internet that is usually written like the author is having a conversation with you.



Built environments refers to all the human-made structures and spaces around us, like buildings, roads, and parks.



C40 Cities is a group of big cities worldwide that team up to make cities cleaner and better for everyone.



Centre for Disability Land Inclusion Africa is a group in Africa that helps people with disabilities have the same chances and rights when it comes to land and opportunities.



Care interventions are actions or treatments provided to help someone with their health or well-being, like medical treatments or support services



Climate action means doing things to help the environment and stop climate change, like using clean energy or planting trees.



Colombia is a country in South America with many different cultures, beautiful places, and lots of different plants and animals.



Communication aids are tools or devices that help people who have difficulty speaking or understanding, like picture boards or speech-generating devices



Data is information about the number of different things, such as the number of people with a disability.



Disability Inclusion Helpdesk is a place where you can get information and support about helping people with disabilities.



Discrimination is when someone is treated unfairly because of who they are or what they look like.

Diversity is where people are different to one another.



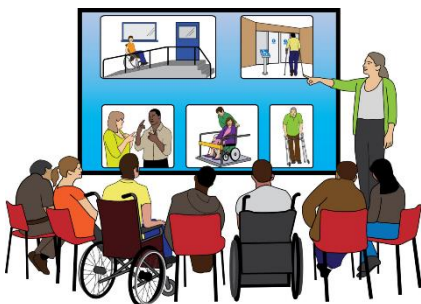
Environments are the places where we live, work, and play, including indoors and outdoors, like homes, schools, and parks.



Equality means treating everyone fairly and giving them the same opportunities, regardless of their differences like race, gender, or abilities.

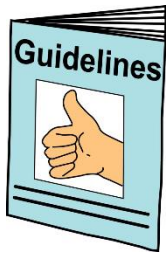


Exclusionary describes something that keeps certain people out or prevents them from being included, like rules or practices that discriminate against specific groups.



Global Disability Innovation Hub is a place where people work together to create new ideas to help people with disabilities live better lives.

Guidelines are like rules or suggestions that give you direction



on how to do something or behave in a certain way, often to achieve a specific goal or standard.



Hygiene refers to practices that keep you clean and healthy, like washing your hands, taking showers, and brushing your teeth.



Inclusive social movements are a group of people working together to try and help all people have equal opportunities.



Inclusion is making sure that all people can take part in an activity.



Inclusive design means creating things, like products or spaces, that can be used and enjoyed by as many different people as possible, regardless of their age, abilities, or background.



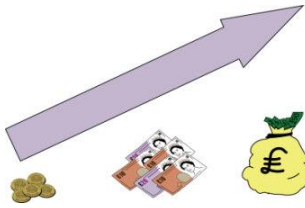
Infrastructure refers to the basic physical structures and facilities needed for a society to function smoothly, like roads, bridges, water supply systems, and power grids



Infrastructure projects are plans or actions aimed at building or improving the basic physical structures and facilities that support a community or a country, like constructing new roads, bridges, or airports.



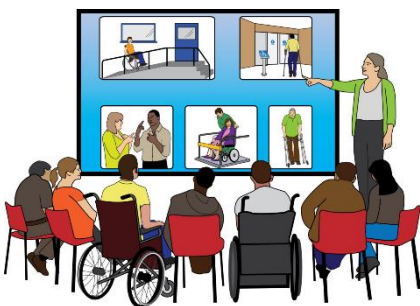
International Development supports people around the world who do not have enough access to the things they need.



Investing means putting money into something to make more money later on.



Invisible disabilities are health issues you can't see from the outside, like problems with thinking or pain that doesn't show.



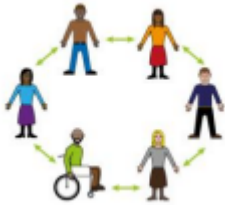
Japan International Cooperation Agency is a group from Japan that helps other countries with projects to make life better for people.



Local Governments are groups of people who make decisions and rules for a small area, like a town or city.



Mobility impairments mean difficulties moving around or getting from one place to another, like trouble walking or using a wheelchair.



Organisations of people with disabilities work around the world and support people with disabilities to live good lives.



Public resources are things that everyone in a community can use, like parks, libraries, or buses.



Research is about finding lots of information about a specific thing and bringing it all together.



A **report** is a document that tells about something, like an event, a problem, or findings from research.



Rights are things that you are allowed to do or have, like the right to be treated fairly or the right to express your opinion



Sanitation means keeping things clean and healthy, like having access to clean water, toilets, and waste disposal.



Sustainable Development Goals

are a set of 17 goals to make the world better for everyone by tackling issues like poverty, environment, and fairness.



Urban describes places where many people live close together, like cities or towns, usually with lots of buildings, streets, and businesses.



Urban Design is about planning and making cities or towns look and function well, including things like buildings, streets, parks, and transportation.



Urbanet is a website that provides information and resources about urban development and city issues from around the world.



The **World Bank** is an organisation that helps countries around the world by giving them money, advice, and support to reduce poverty and build better lives for people.



The **World Economic Forum** is a gathering where important people from all over the world meet to talk about big problems and try to find ways to fix them.

Contact us



If you want to talk to us send an email to this address
enquiries@disabilityinclusion.org.uk

Images/Resources copyright © LYPFT



**People
First**



Images used in this document come from the People First (Self Advocacy) Picture Bank

Disability Inclusion Helpdesk, February 2021	
Evidence digest focus issue: Social Protection and Disability Inclusion	
Contents	
• Contents	1
• Social Policy: protecting people in vulnerable situations	1
• The labor market and the impact of disability on labor market participation	2
• The labor market and the impact of disability on labor market participation	3
• Evidence	4
• Policy Propositions	5
• Evidence	7
• Evidence	7
• Recommendations for social protection and disability inclusion	8
• How to contact the helpdesk	8
• About the Disability Inclusion Helpdesk	9

The full version of this document is called **Evidence Digest: Disability Inclusion and Inclusive Urban Design**

